

HOW DO YOU KNOW IF YOUR IMPORT NEEDS A PRA?

Products have never been
previously imported



Products originate from a country
or regions not previously approved



Pest/disease status of the
country or region changes



New information on a
particular pest/disease



Process of regionalization is
initiated



Pest Risk Analysis Process



**Risk
Communication**-
Interactive
exchange of
information and
opinions
concerning risks

**Risk
Assessment**
*Science
Based

**Risk
Management**
*Policy based

For more information about our unit

CONTACT US

Visit our website
[https://www.moa.gov.jm/
content/pest-risk-analysis-unit](https://www.moa.gov.jm/content/pest-risk-analysis-unit)

Phone Number

1-876-977-7160

Visit our office

Pest Risk Analysis Unit
Plant Quarantine/Produce
Inspection Branch
Ministry of
Agriculture, Fisheries & Mining
193 Old Hope Road
Kingston 6



Pest Risk Analysis Unit



Together we must protect Jamaica's Agriculture
Sector

What is Pest Risk Analysis (PRA)?

A process of investigation, evaluation of information and decision making with respect to a certain pest, commodity, plant or plant produce.

Why conduct a PRA?

Pest Risk Analysis (PRA) is done to protect the country's agriculture from damages that can be caused by harmful (quarantine) pests which can be brought in along with imported commodities.

Jamaica is obligated under the World Trade Organization (WTO) agreement to provide scientific reasons for restricting international trade of plant/plant produce



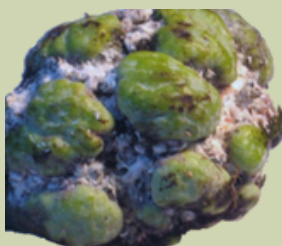
Papaya Whitefly on Papaya leaf

What does a PRA entail?

PRA evaluates the likelihood of the entry, establishment, and spread of a pest and the associated potential biological and economic consequences.

Once the likelihood and consequences are determined, a risk rating is assigned, and mitigative and management strategies are recommended to Policy Makers.

The process may culminate in either the granting of permit, prohibition of entry of the commodity or permit granted with phytosanitary declarations



Pink Hibiscus Mealy Bug
on Sweet Sop

Types of PRA

1. Pathway-initiated/Commodity

- Done in response to a plant/seed/plant produce being imported for:
- Planting
- Consumption

2. Pest-initiated PRA

- Done in response to a pest/disease of quarantine importance

How long does a PRA take?

A PRA involves several stakeholders as well as information gathering and evaluation to be able to inform the decisions of the Policy Makers. Pertinent information is not always readily available. A PRA can therefore take months to years to complete depending on stakeholders.

Requirements for conducting a PRA

1. Register on <https://www.jsswift.gov.jm>
2. Select "Other services" "Product registration" "New"
3. Select "Pest Analysis Process" for process type
4. Fill out the form and submit